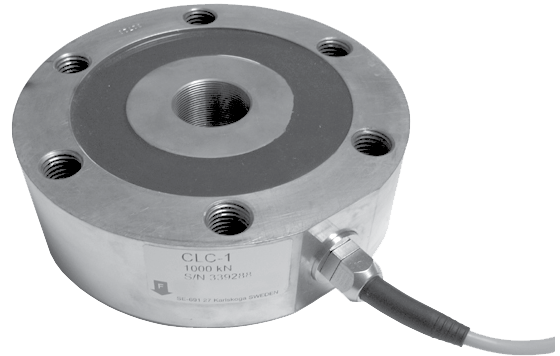


Low Profile Shear Force Load Cell

FEATURES

- Capacity 250, 500, 1000 and 2000 kN
- Other capacities on request
- Very low profile
- High long-term stability and repeatability
- Operating temperature range -40 to $+80^{\circ}\text{C}$ ($+125^{\circ}\text{C}$ with optional Teflon cable)
- 10 m special cable. Option: Load cell with connector
- Yellow Chromate Zinc plated steel
- Protection class IP67
- **OPTIONS**
 - Load cell can be customized to a large variety in dimensions and capacities
 - Customised adaptor plates and other mounting assemblies on request



APPLICATIONS

- Silo and hopper weighing
- Tundish weighing
- Various applications in steel mills and foundries
- Industrial applications

DESCRIPTION

The model CLC-1 is a very low profile load cell, working according to the shear force principle (no membrane), ideally suited for applications in harsh environments.

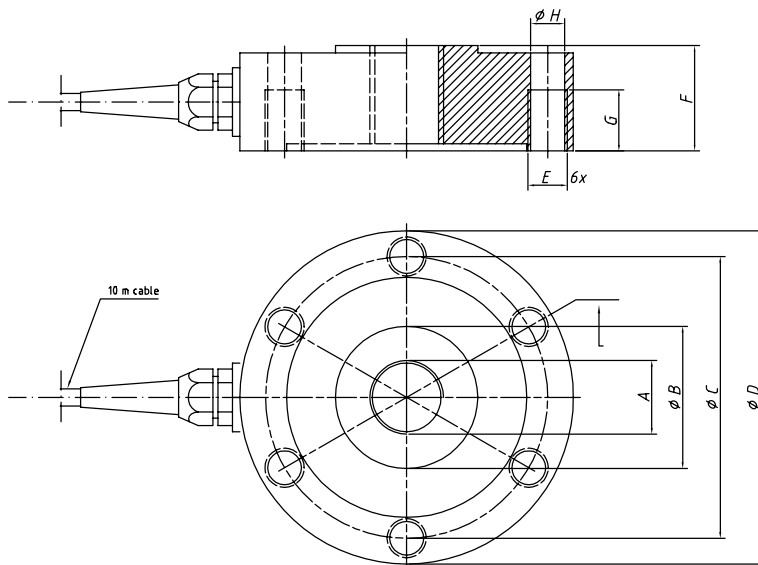
Due to the special design, the CLC-1 load cell is insensitive against side loading and other interfering effects.

Because of the high operating temperature range of -40 up to $+125^{\circ}\text{C}$, the CLC-1 load cell is suitable for use in steel mills and foundries.

Due to the high repeatability and high long-term stability, the load cell supplies very good results, even after perennial use.

Protection class IP67 gives an excellent protection against dust and moisture.

OUTLINE DIMENSIONS IN MM



DIM.	25t	50t	100t	200t
A	M30 x 1,5	M30 x 1,5	M40x1,5	M55x1,5
B	58	58	85	120
C	115	115	164	220
D	136	136	195	263
E	M16	M16	M20	M24
F	43	43	58	67
G	25	25	30	40
H	13,5	13,5	18,5	21

Low Profile Shear Force Load Cell

SPECIFICATIONS	
PARAMETER	VALUE
Rated capacity (RC)	250, 500, 1000, 2000 kN
Rated output (C)	1 mV/V
Total error	±<0.1% of C
Temperature effect: on zero	±0.005% of C/°C
Temperature effect: on output	±0.005% of C/°C
Nominal temperature range	-10 to +80°C
Operating temperature range	-40 to +80°C (+125°C on request)
Safe overload	200% RC
Ultimate overload	>300% RC
Max. admissible side load	50% RC
Recommended excitation	10 VDC or VAC
Max. supply voltage	36 VDC or VAC
Input impedance	750 Ω ±15 Ω
Output impedance	700 Ω ±10 Ω
Insulation impedance	>2000 MΩ
Material	Yellow chromate zinc plated steel
Environmental protection	IP67

BLH Nobel is continually seeking to improve product quality and performance. Specifications may change accordingly.