

Low Capacity Weigh Module

FEATURES

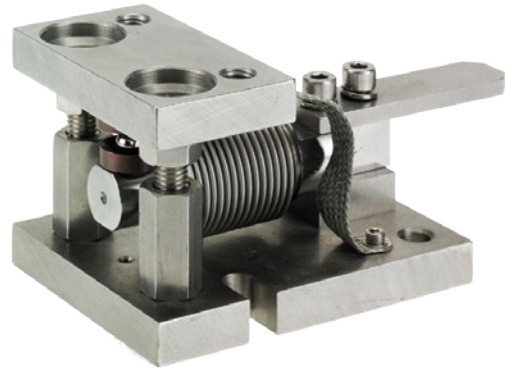
- Capacity range: 11.2, 22, 44, 110, 220, 440, 551 and 1.1K lb (5, 10, 20, 50, 100, 200, 250, and 500K kg)
- Load beam hermetically sealed to IP68
- High-grade stainless-steel construction
- Overload and uplift safety protection
- Accommodates process dynamics and thermal expansion

APPLICATIONS

- Storage tank weighing
- Hopper scale conversion
- Level system measurement
- Loss-in-weight feeders

DESCRIPTION

EZ-Mount Weigh Modules are designed for maximum accuracy coupled with a high degree of resistance to the adverse effects of overload and sideload forces. Each module consists of a bending beam transducer packaged in a rugged stainless steel mounting system. Specifically designed for use on low capacity process vessels, modules meet IP68 and NEMA 6 immersion requirements and mechanically resist high overload and sideload forces. Built in load adaption technology automatically compensates for vessel thermal expansion and contraction.

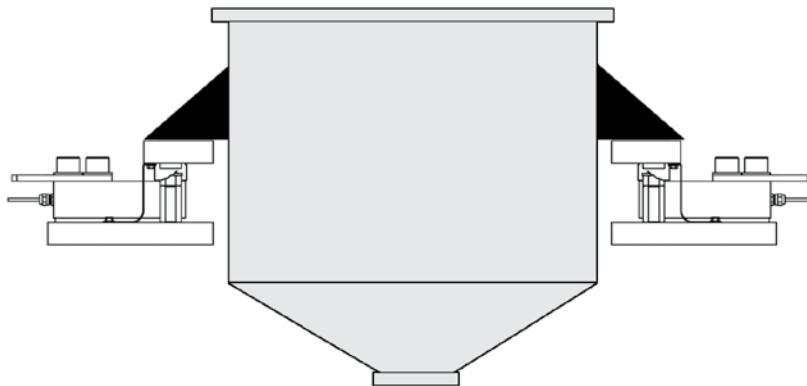


A substantial protection plate, positioned above the cable entry gland, prevents damage from plant debris and traffic.

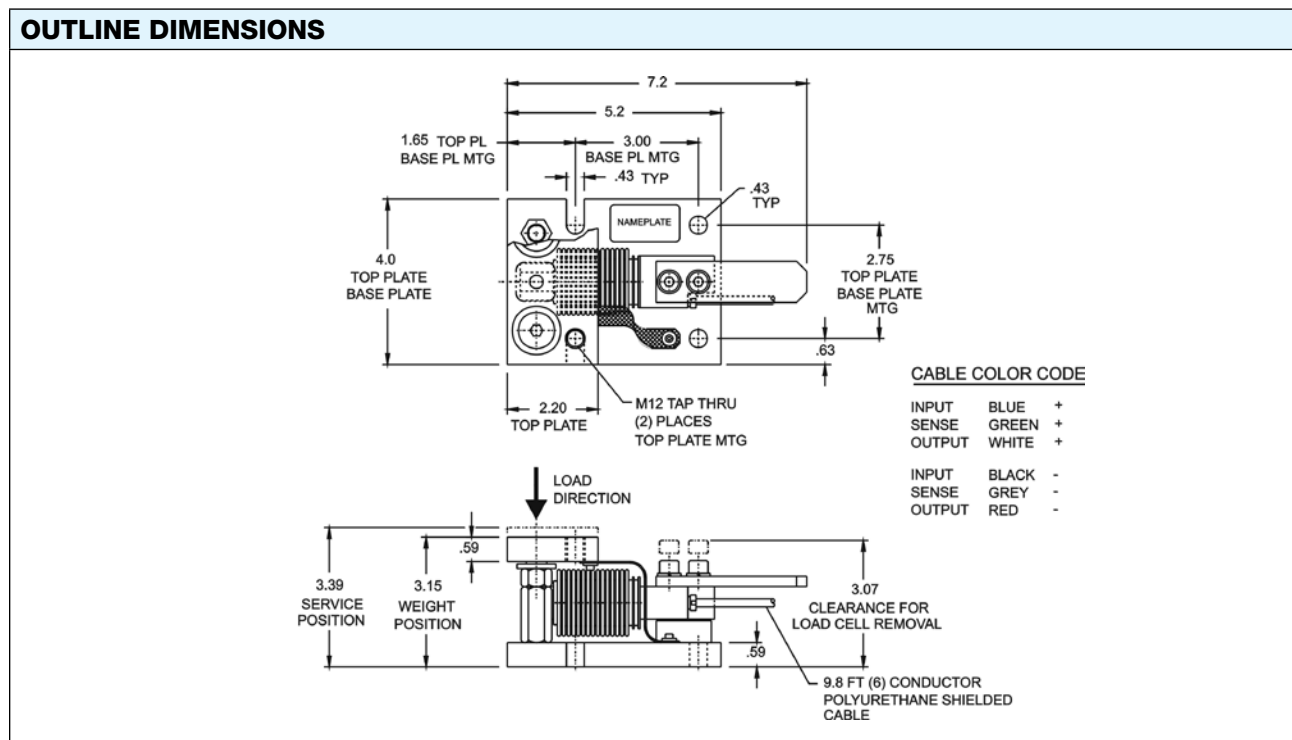
Simplified bolting patterns expedite both retrofit and new vessel installations. EZ-Mount modules can be fully installed without the load beam, reducing any risk of load cell failure. After installation, simply slide the beam into place and adjust the overload safety stops.

In frequent washdown areas, the ground strap may be removed (after installation) without affecting module performance.

CONFIGURATION



Low Capacity Weigh Module



SPECIFICATIONS

PARAMETER	VALUE	PARAMETER	VALUE
PERFORMANCE		TEMPERATURE	
Capacities	11.2, 22, 44, 110, 220, 440, and 551 lb (5, 10, 20, 50, 100, 200, and 250 kg)	Safe range	-22 to 176°F
Rated output (RO)	2.0 mV/V ±0.1%	Compensated range	+14 to 104°F
Repeatability	0.02% RO	ADVERSE LOAD RATINGS	
Combined error*	0.015% RO	Safe load	150% rated capacity
Zero balance	2% RO	Ultimate load	300% rated capacity
Creep (30 minutes)	0.03% RO	MATERIAL	
Temperature effects on zero balance	0.0013% RO/°F	Beam and plates	stainless steel
Temperature effects on span	0.0008% RO/°F	SEALING	
ELECTRICAL		Environmental class	IP68*
Recommended excitation	10 VDC (15 V max.)	DEFLECTION UNDER LOAD UNIT WEIGHT	
Input resistance	380 Ω ±10 Ω	All capacities	<0.016 in
Output resistance	350 Ω +10/-3 Ω		
Cable length	9.8-ft cable with 6-wire polyurethane jacket		

*beam specification only

BLH Nobel is continually seeking to improve product quality and performance. Specifications may change accordingly.