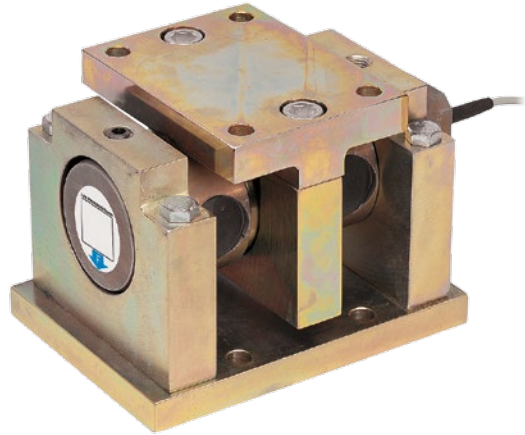


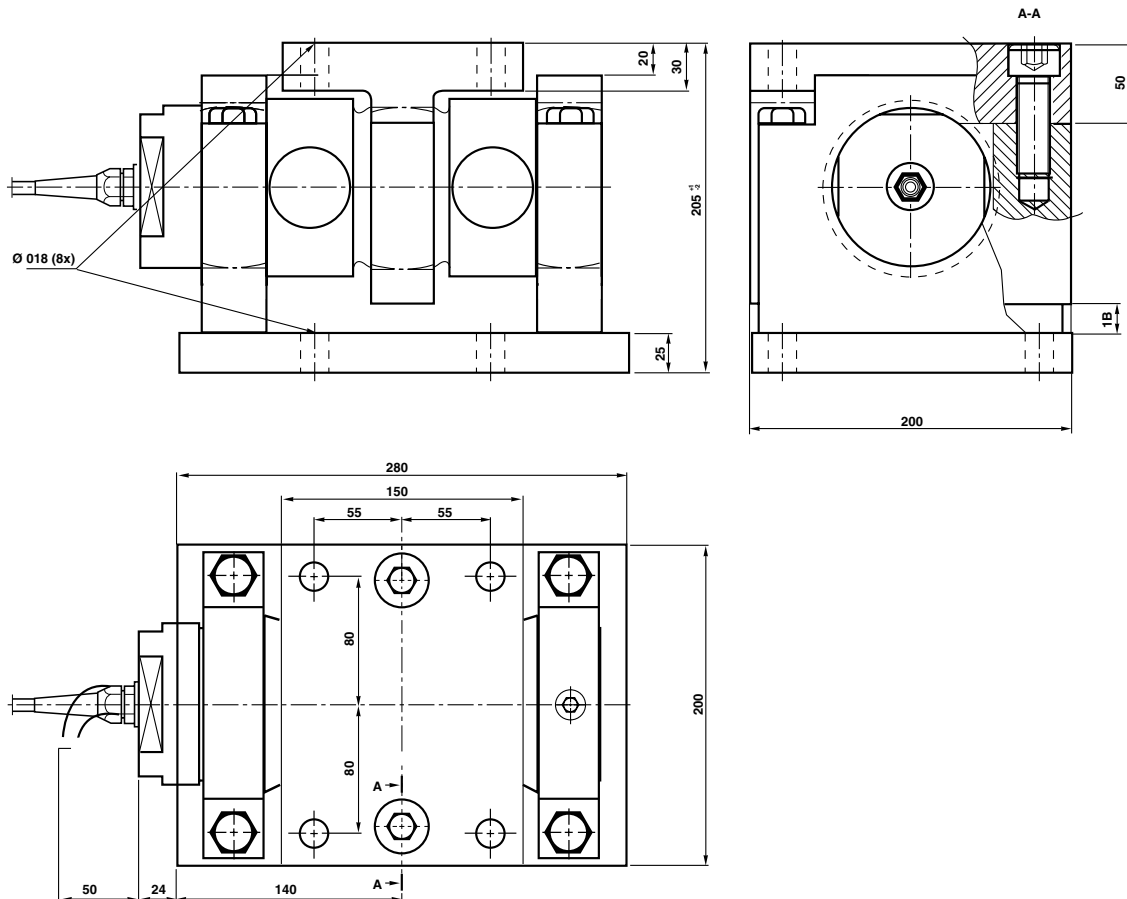
Weigh Module

FEATURES

- Easy installation
- No extra mounting detail is needed
- Suitable for weighing in large size
- Movable load point
- Allow movement caused by thermal expansion
- ATEX and IECEx certified for hazardous locations

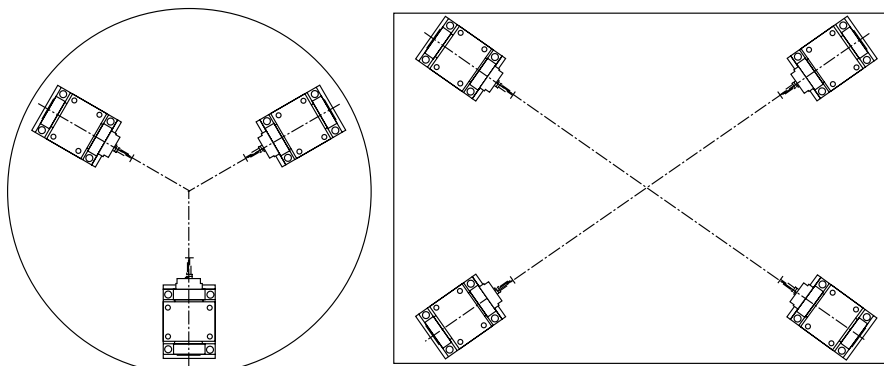


OUTLINE DIMENSIONS



Weigh Module

ORIENTATION OF WEIGH MODULES



Recommended weigh module orientation in order to give self locking conditions and freedom for mechanical movements caused by temperature.

SPECIFICATIONS

PARAMETER	VALUE
Rated load (RL)	250, 500, 800 and 1000 kN
Combined error (terminal)	±0.1% RO
Repeatability	0.02% RO
Overload, safe	50% RL ⁽¹⁾
Overload, ultimate	100% RL ⁽¹⁾
Input voltage, recommended	10 VDC or VAC
Input voltage, maximum	18 VDC or VAC
Input resistance	350 Ω ±5 Ω
Output resistance	350 Ω ±0.5 Ω
Rated output (RO)	2.040 mV/V
Tolerance of (RO)	±0.25% RO
Zero balance	±2% RO
Tolerance of shunt calibration values	±0.25% of value ⁽²⁾

PARAMETER	VALUE
Creep at RL after 30 minutes	±0.03% RL
Temperature range	-40 to +80°C (+100°C) ⁽³⁾
Temperature effect on output (-10°C to +50°C)	±0.003% of output/°C
Temperature effect on zero balance (-10°C to +50°C)	±0.003% of RO/°C
Insulation resistance at 200 VDC	>4 GΩ
Material	Yellow chromate steel
Electrical connection	10 m shielded four conductor
Degree of protection	IP67
APPROVALS	
ATEX, IECEx certified versions are available upon request. For details contact blhnobel@vpgsensors.com.	

(1) Referring to recommended loading case
 (2) See calibration sheet of the load cell
 (3) -40 to +100°C on demand

BLH Nobel is continually seeking to improve product quality and performance. Specifications may change accordingly.