

Weighing Module

FEATURES

- High accuracy—0.1% combined error
- Easy installation
- Suitable for harsh environmental conditions
- ATEX and IECEx approved for hazardous areas
- Movable load point eliminating thermal expansion effects
- No additional mounting required
- High capacity 500–2000 kN

APPLICATIONS

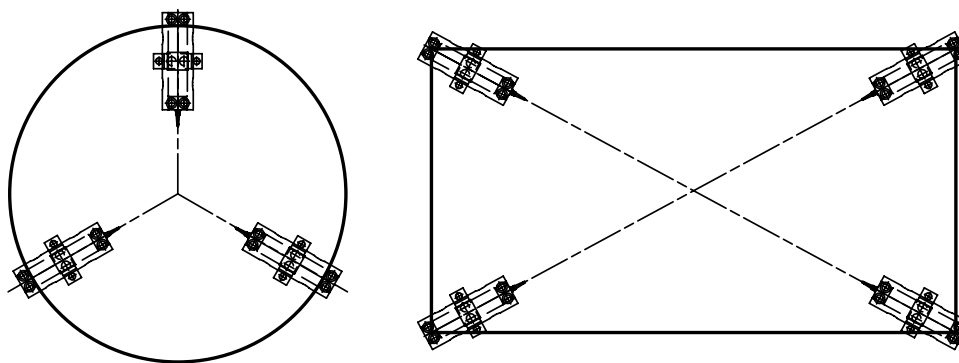
- Tank weighing
- Vessel weighing
- Silo weighing
- Ladle weighing

DESCRIPTION

Load cell weighing module for heavy duty application with moveable load point as in KIS principal. This weighing module is designed for operation in harsh environment and hazardous areas with high accuracy.



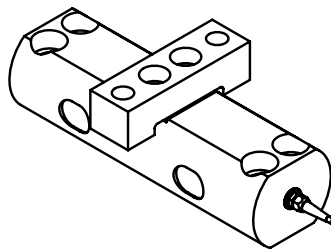
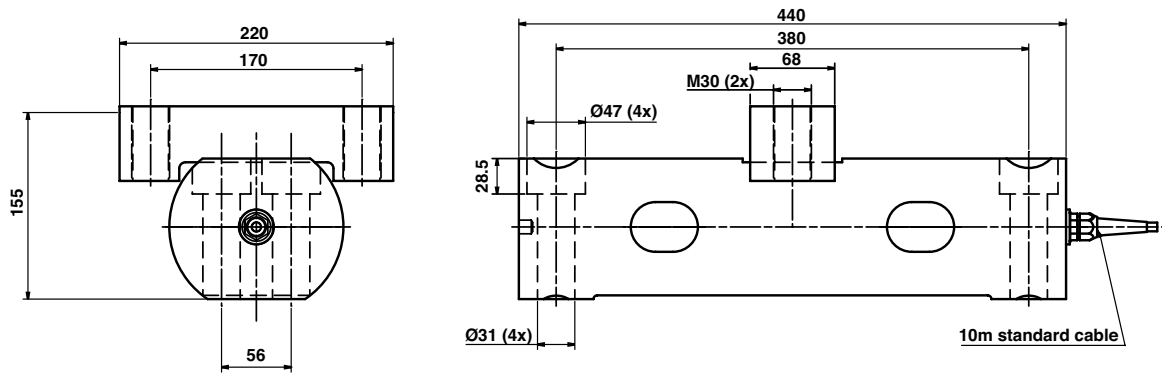
CONFIGURATION



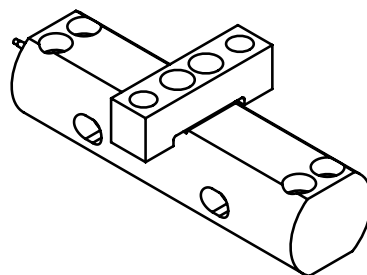
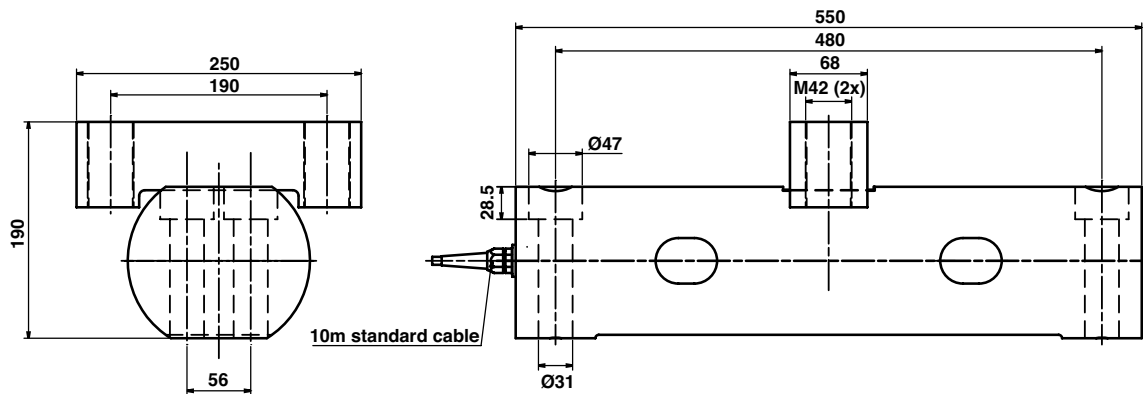
Weighing Module

OUTLINE DIMENSIONS (IN MILLIMETERS)

500–1000 kN Capacities:



1500–2000 kN Capacities:



Weighing Module

SPECIFICATIONS	
PARAMETER	VALUE
Rated load (RL)	500, 1000, 1500, 2000 kN
Combined error (terminal)	±0.1% RO
Repeatability	0.02% RO
Safe overload ref. to recommended loading point	100% RL
Ultimate overload ref. to recommended loading point	200% RL
Input voltage (recommended)	10 VDC or VAC
Input voltage (maximum)	18 VDC or VAC
Input resistance	350 Ω ±5 Ω
Output resistance	350 Ω ±0.5 Ω
Rated output (RO)	0.9 mV/V
Tolerance of RO	±0.25% RO
Zero balance	±2% RO
Tolerance of shunt calibration values	±0.25% of value (actual output listed on unit calibration sheet)
Creep at RL after 30 min	±0.03% RL
Operating temperature range	-40 to +80°C -40 to +100°C upon request
Temperature effect (-10 to +50°C) on output	±0.005% of output/°C
Temperature effect (-10 to +50°C) on zero balance	±0.005% of RO/°C
Insulation resistance at 200 VDC	>4 GΩ
Material	Yellow chromate steel
Electrical connection	10 m shielded four conductor cable
Degree of protection	IP67
APPROVALS	
ATEX, IECEx certified versions are available upon request. For details contact blhnobel@vpgsensors.com .	

BLH Nobel is continually seeking to improve product quality and performance. Specifications may change accordingly.