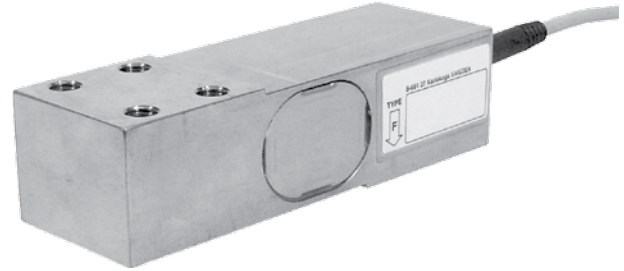


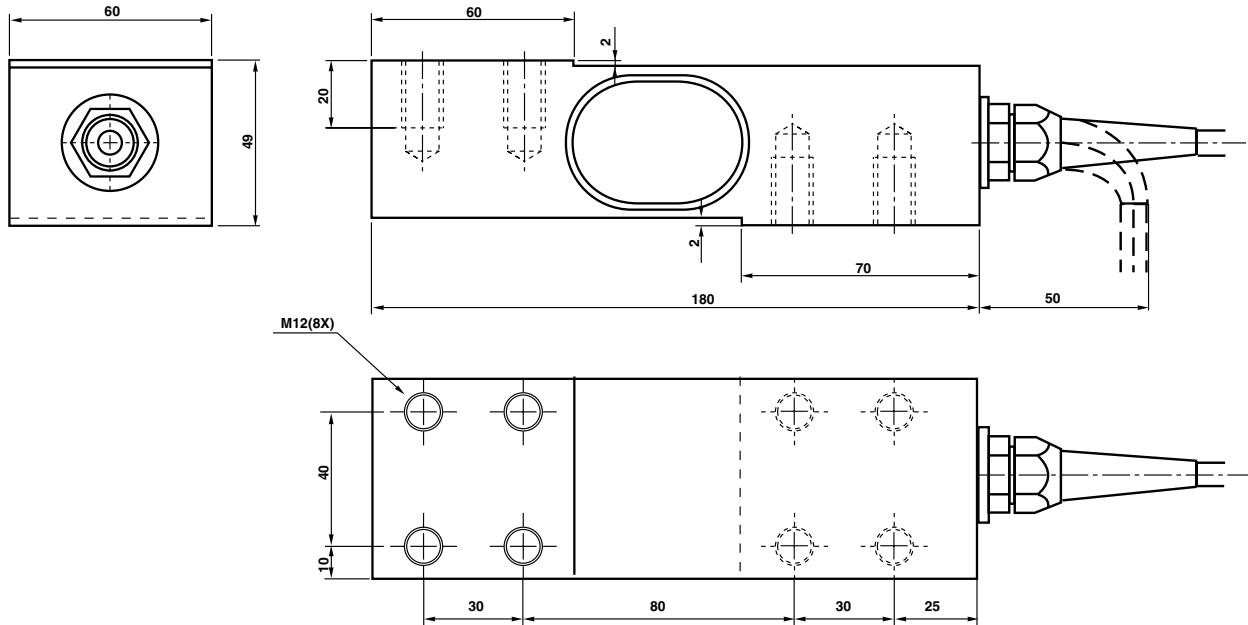
Web Tension Transducer

FEATURES

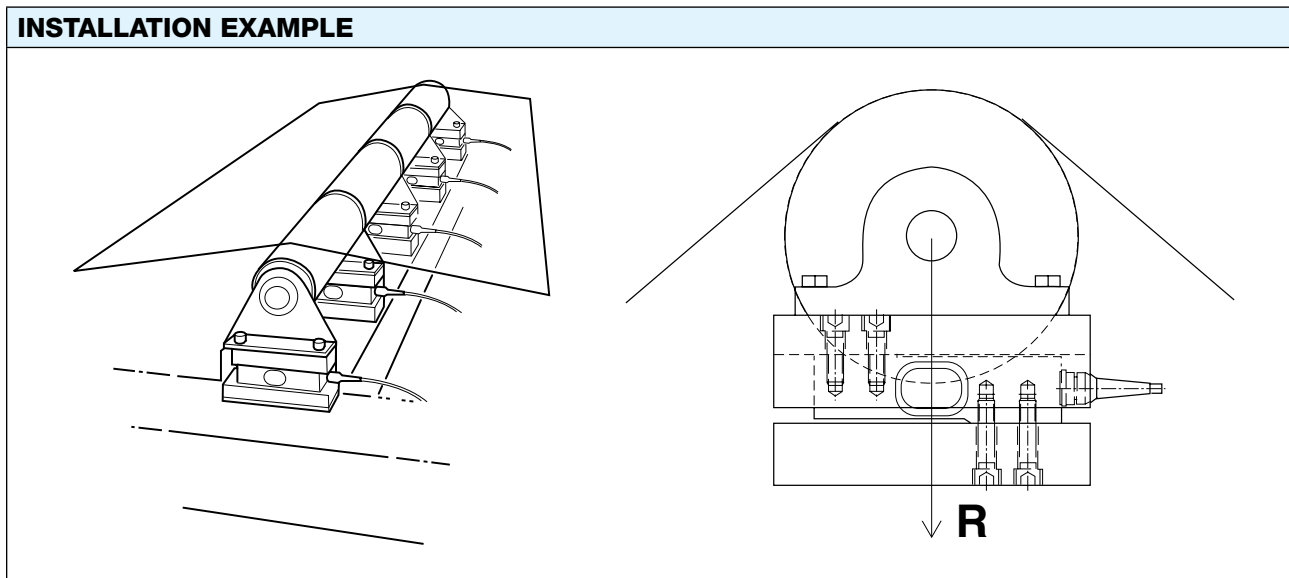
- Withstand high overload
- Robust design with low deflection
- Small dimensions and easy installation



OUTLINE DIMENSIONS



Web Tension Transducer

INSTALLATION EXAMPLE

SPECIFICATIONS

PARAMETER	VALUE
Rated load (RL)	10 and 20 kN
Combined error (terminal)	±0.1% RO
Repeatability	0.02% RO
Overload, safe	100% RL ⁽¹⁾
Overload, ultimate	200% RL ⁽¹⁾
Input voltage, recommended	10 VDC or VAC
Input voltage, maximum	18 VDC or VAC
Input resistance	382 Ω ±3 Ω
Output resistance	350 Ω ±3 Ω
Rated output (RO)	1.020 mV/V
Tolerance of (RO)	±0.25% RO
Zero balance	±2% RO
Temperature range	-40 to +80°C (+100°C) ⁽²⁾
Temperature effect on output (-10°C to +50°C)	±0.005% of output/°C
Temperature effect on zero balance (-10°C to +50°C)	±0.005% of RO/°C
Insulation resistance at 200 VDC	>4 GΩ
Material	Stainless steel
Electrical connection	5 m shielded four conductor cable
Degree of protection	IP67

(1) For load perpendicular to the transducer

(2) -40 to +100°C on demand

BLH Nobel is continually seeking to improve product quality and performance. Specifications may change accordingly.